

TRANSPORTATION
drainage channels

COLETANCHE®

CIVIL ENGINEERING



DRAINAGE CHANNELS

COLETANCHE® SC1

COLETANCHE® SC1

Bituminous geomembrane for drainage channels (transportation)

COLETANCHE® SC1, is the latest addition to the COLETANCHE® line. This reinforced elastomeric bituminous geomembrane is specially formulated to provide a reliable, cost-effective solution for waterproofing roadside and highway ditches that complies with European Union water legislation (stormwater runoff) aimed at protecting groundwater.

Guaranteed compatibility with hot asphalt mixes

The bituminous content of COLETANCHE® SC1 ensures full compatibility with hot asphalt mixes (macadam). It provides uncompromising watertight integrity at the top of the ditch during the application of the hot asphalt mix (macadam) with no extra protection required, unlike polymeric membranes, which deteriorate under the effect of heat and require added protection.

The easy-to-handle “all-terrain” geomembrane

Minimal risk of wind uplift

With its 2.5 kg/m² (74 oz/yd²) surface mass and the resistance inherent to bituminous geomembranes, COLETANCHE® SC1 frees users from the need for woven geotextiles (base sheet and added protection) and minimizes the risk of wind uplift during geomembrane installation.

Weldable in all weather conditions; no special equipment required

Flame welding using propane torches simplifies worksite organization by ensuring quick and easy installation. The torch-on technique can be used in wet and cold weather, unlike the hot air welding required by polymeric membranes.

The practical benefits of an “all-in-one” geomembrane

Internally reinforced COLETANCHE® SC1 does not require the installation of a puncture-resistant geotextile. The sanded surface provides an excellent friction angle and can in most cases be covered directly with soil with no need for geogrids.



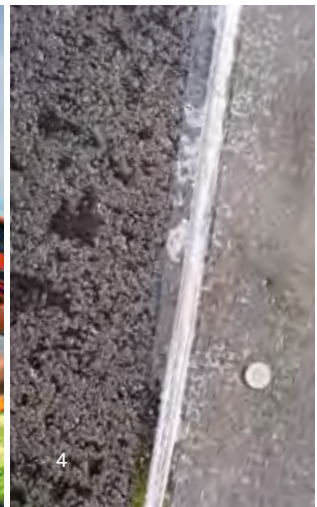
(1) A steel mandrel facilitates unrolling



(2) Torch-welded geomembrane



(3) Geomembrane anchored to the ground with a staple



(4) Geomembrane anchored to the old asphalt with a nail



////// **Made to measure for waterproofing roadside ditches** ////////////////

Available in a selection of widths (from 2.50 m to 5.10 m - from 8.2 ft to 16.7 ft), COLETANCHE® SC1 adapts to your worksite and optimizes efficiency by reducing the number of unrolling and overlapping operations. Since it is installed lengthwise, COLETANCHE® SC1 also reduces the number of transversal waterproofing joints (one joint every 150 metres or 164 yd on average).

Maintenance is minimal and straightforward: In the event a repair is required, simply weld a patch of the same product to the damaged area.

////// **Quick and easy to install as waterproofing and asphaltting work advances** ////////////////

SC1 is mounted on sturdy steel mandrels, which makes the membrane easy to manipulate and unroll using a manual or hydraulic beam.

└ **The case for COLETANCHE® SC1**

An affordable and effective alternative to polymeric membranes

. **Just one product to install**

No geotextile on the bottom or top surface means time savings on material procurement, delivery, and installation.

. **The right width for your project**

“Tailor-made” widths mean COLETANCHE® SC1 can be installed immediately; no need to cut or fold to fit.

. **Simplified preparation** of excavated material.

Clear advantages

. **For installers**

Quick and easy to install in all weather conditions, compatible with hot asphalt mixes (macadam), simple to repair.

. **For operators**

Installs directly on the support, no puncture-resistant geotextile required, minimizes the risk of wind uplift, won't hinder traffic in the vicinity after installation.

. **For main contractors**

Guaranteed waterproofing, minimum number of joints, superior mechanical impact resistance, easy to repair, economical to maintain.

Characteristics

Composition: Non-woven geotextile reinforced structure and specially designed bituminous waterproof binder

Thickness: 2,2 mm (87 mils)

Length: up to 150 m (164 yd), depending on the width

Available widths: 2.50 to 5.10 m (from 8.2 ft to 16.7 ft), on request

Asqual certification



COLETANCHE®

by AXTER

International Civil Engineering waterproofing specialist

COLETANCHE® geomembranes have been used by civil engineering professionals for over 20 years. Drawing on hands-on experience and extensive research, we designed the COLETANCHE® SC1 version to meet the special needs of roadside and highway ditch waterproofing. Our highway ditch waterproofing projects include French highways A63, A26, A65, interchanges A2, A23, etc.

Axter
Registered Office, Commerce
France and International
8, avenue Félix d'Hérelle
F-75016 Paris - France
Tel.: +33 (0)1 46 09 39 60
Fax: +33 (0)1 46 09 39 61

Axter Factory and
Customer Service France
Rue Joseph Coste
F-59552 Courchelettes - France
Tel.: +33 (03) 27 93 10 20
Fax: +33 (03) 27 93 10 21

Axter Coletanche Inc.
1030 rue Beaubien Est - Suite 301
Montréal, QC H2S 1T4 - Canada
Tel.: +1 (514) 903-1912
Fax: +1 (514) 903-6821
Email : info@axtercoletanche.com

Axter Australia
Suite 1306 - 50 Cavill Avenue
Gold Coast
4217 Australia
Tel.: +61 (7) 56 35 44 89
Email : info@axter.com.au

Axter Limited
West Road Ransoms Europark
Ipswich Suffolk - IP3 9 SX
United Kingdom
Tel.: +44 1 4737 240 56
Fax: +44 1 4737 232 63
Email : info@axterltd.co.uk

Axter Asia
2/51 Thosapol Land 4 - 11th Floor
Bangna Trad Road
Bangna, Bangkok 10260 - Thailand
Tel.: +922 (0) 27 44 31 80 EXT. 320
Mobile : +922 (0) 9 22 610 601
Email : info@axter.eu

Axter Central and Eastern
Europe Central Asia
33, rue des 3 Frontières
68110 Illzach - France
Tel.: +33 (03) 89 61 51 61
Fax: +33 (03) 89 61 52 60
Email : info@axter.de

Axter CZ s.r.o
Eliášova 20
160 00 Prague 6 - Czech Republic
Tel.: +420 222 951 195
Fax: +420 222 942 895
Email : info@axter.info

Axter Ibérica
Apdo. de Correos 180
P.I. Ca N'illa
Avda. Jacint Verdaguer, 26
08530 La Garriga (Barcelona)
Spain
Tel.: +34 93 871 7333
Fax: +34 93 871 7304
Email : info@axter.es

Axter Chile
La Concepción,
65, Oficina 904 Providencia
7500010 Santiago de Chile
Chile
Tel.: (+56-22) 2236 99 39
Email : info@axter.es

Axter Benelux
Hendrick Van Veldekesingel
150/b13
3500 Hasselt - Belgium
Tel.: +32 (0)11 87 09 36
Fax: +32 (0)11 87 09 37
Email : info@axter-benelux.be

www.coletanche.com



The information and photographs in this publication are not contractual - The manufacturer reserves the right without notice to make any changes it deems necessary for the improvement of its products - The information contained in this document does not replace the need for documents specific for each site. It is given as example and based on general cases only, not taking into account the special circumstances related to terrain, weather conditions... of specific sites. For further information, please contact our technical consultants on +33 (0)3 27 93 25 49 and refer to the technical documents available at www.coletanche.com.

